



MICHIGAN STATE UNIVERSITY | SSL VPN

Welcome to the
Secure Access Service

MSUnet ID Please sign in to begin your secure session.

Password

Sign In

What is a VPN? - VPN stands for Virtual Private Network. It is a way to log in and create a secure connection to a computer network, when you are not physically plugged into that network.

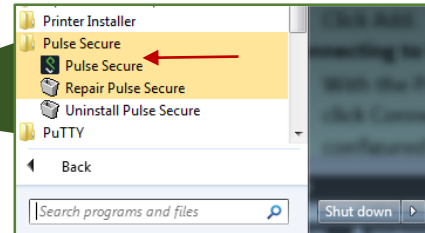
Benefits of a VPN - You can still access secure MSU systems from home, out of the office or when traveling. For example, you can access your files on the RHS Network Share drive (V: drive) or access the MSU Enterprise Business System (EBS) and SAP.

Before you begin - The latest version of the MSU VPN software should automatically be installed on to your computer. If it doesn't seem to be installed automatically or if you would like to request access, request installation by logging a service request at is.rhs.msu.edu or by contacting the IS Help Desk by phone at 517-353-1691.



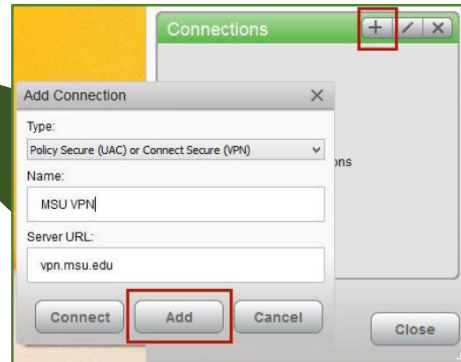
Launching Pulse Secure

- From a Windows 7 computer, click Start > All Programs > Pulse Secure > Pulse Secure.



Configuring Pulse Secure

- With Pulse Secure open click on the “+” icon next to Connections and enter the following information when prompted:
 - Type: UAC or SSL-VPN (Default)
 - Name: Enter a name for the VPN connection.
 - Server URL: vpn.msu.edu



- Click Add.

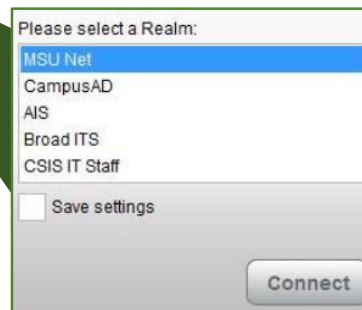
Connecting to MSU VPN

- With the MSU VPN settings configured, click Connect.



VPN Authentication

- You will be prompted to login to the VPN service.
- Select a Realm of MSU Net. Check the Save Settings checkbox then click Connect.
- You will be prompted to provide your User Name and Password.



Disconnecting

- There will be a green checkmark before Disconnect if you have successfully connected to MSU IT Service’s VPN service.
- If you wish to disconnect from the service, click on Disconnecting and then close to exit the application.

Saved Password Assistance

- IT Services recommends that you not save your password in the Pulse Secure application.
- If you’ve accidentally saved your password information, you can remove it by right-clicking the connection and choosing Forget Saved Settings from the menu.

